



Deeping St. James

Issue No.258    October 2024

# The Deepings u3a NEWSLETTER

Website: [deepings.u3asite.uk](http://deepings.u3asite.uk)

[Click here to visit our  
Deepings website](http://deepings.u3asite.uk)



Market Deeping

Welcome

**New members:** Hilary Gentle from Deeping St James

**NEXT MEETING: 21 October.** The Annual General Meeting of Deepings u3a will be held at 10.15am on Monday 21 October 2024, at the Methodist Church, Deeping St. James. After the AGM, there will be our normal monthly talk.

### PROGRAMME OF SPEAKERS:

#### Moulton Mill

#### 21 October: Moulton Mill

Alan Lambert will give us all the details about the restoration and history of Moulton Mill.

#### 18 November: A man who is paid to talk to himself

Chris Bylett will explain how he manages this.

### MARGARET'S MUSINGS

#### Dear members

Welcome to Autumn, with its beautiful colours, to be enjoyed by our walking and natural history groups and by us all as we enjoy our gardens and travels in the surrounding countryside.

Yes, winter is on its way, but I often call to mind a conversation with our local guide, way up in the Norwegian Arctic Circle one February; there was very little daylight and I asked her about life in the small villages in winter. We look forward to the different lifestyle, she said, when we get together in our activity groups and get a renewed chance to socialise. Our many groups close to home give us this opportunity as well.

Plans are well advanced for the Deepings u3a Open Day at the Community Centre in the morning of 11th November; thank you to committee members, group leaders and others who are preparing displays. Please spread the word, come along yourselves and bring friends, encouraging them to join.

I look forward to meeting you all at the next general meeting, which is the AGM. The business of the AGM takes only a few minutes and then we have a very interesting talk on the history of Moulton Mill.

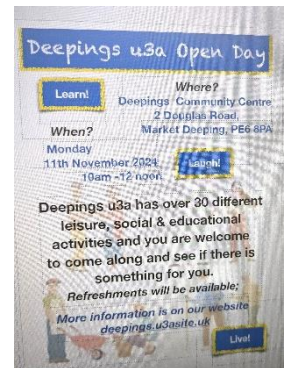
#### Best wishes

Margaret

Chair, The Deepings u3a

### SUNDAY LUNCH GROUP

The booking for the October lunch is – Sunday 27 October at 12.30 for 1pm in The Sugar Mill in Bourne. Phone Helen on 01778 345674 or email [helen.perkins500@gmail.com](mailto:helen.perkins500@gmail.com)



**Report: Helen Perkins**

**Group Leaders: Helen Perkins and Enid Withers**

## SCIENCE GROUP

In September we had a talk about microwaves and how they are used in microwave ovens. Did you know that the mesh in the door is the size it is to stop the microwaves escaping, but visible light can pass through? Did you also know that if you remove the turntable and cook some cheese slices, with a couple of simple measurements you can work out the speed of light?

If you fancy finding out more fun facts then join us next month on 15 October.

**Report by: Gill Godden**  
**Group Leader: Garth Perry**

## MONDAY WALKING GROUP



On what turned out to be a pleasant, sunny morning fourteen walkers met at The Horseshoe, Thurlby. We began by walking to Dole Wood where we learnt about the railway that ran from Essendine to Thurlby (open 1860) connecting Thurlby to the main North/South line. No bluebells or wild garlic at this time of year but the leaves were starting to fall from this ancient woodland, adding wonderful Autumn colour.

We continued into Thurlby and walked to the top of Swallow Hill, turning right onto the footpath at the Manthorpe/Toft junction. At the end of a long tunnel hedge we enjoyed views over Bourne, Thurlby and in the distance Spalding.

Heading downhill across a field (thankfully the mud had begun to dry out), we entered Northorpe. We continued walking east through the village before turning right into a farm and headed back toward the pub via the edges of fields.

A delicious meal was enjoyed, even better with 20% off for all the group.

**Report: Ann Sutherland**  
**Group Leader: Steve Hanson**

## LISTENING TO MUSIC GROUP

### September report

Our September meeting was hosted by Hilary Corner but took place at Terry Noble's house. Hilary chose a programme mainly of piano music plus some choral items.

We heard a wide range of pieces covering a broad spectrum of styles from Jazzy Scott Joplin through to the more serious Beethoven and Schubert. In a lighter vein, there were hilarious comedy pieces from the late Dudley Moore (*Colonel Bogie in the style of Beethoven*) and Victor Borge.

Also in a lighter vein, Saint-Saëns' *Carnival of the Animals* for piano duet and orchestra consisted of fifteen short movements, thirteen depicting a particular animal, the most intriguing being "personages with long ears" - donkeys!

Our next meeting will be at Phil Jones' house, 10am on 9 October.

### October report

Our meeting in October was held at Phil Jones's house was a real revelation in that it included a number of little-known pieces and composers. Phil presented a programme titled *The Birds got the Bird* together with well researched background notes to each of the pieces heard.

Setting the scene, the morning began with a rendition of Delibes' *Pizzicato*, performed by a squawking chicken – plus a bit of tape recorder manipulation! On a more serious note, we heard *The Swan of Tuonela* by Sibelius. *Nachtengaelkje* by the Dutch composer Jacob van Eyck played on a solo descant recorder was very reminiscent of a nightingale. Most of us were of the age to remember the Australian Bass-Baritone Peter Dawson whose singing of *The Song of the Flea* by Mussorgsky which brought back many memories.

Music arranged for harp – Debussy's *Dances sacree et profane, No. 2* and Ravel's well known *Arabesque No. 1* provided quiet and calm contemplation.

These pieces, plus many more, gave a lovely morning's listening. Thank you Phil for providing a most illuminating morning.

Our next meeting is at Joy Elliman's house, 10 am on 13 November.

**Reports and Group Leader: Terry Noble**

### **NATURAL HISTORY GROUP**



On 27 September, seven members of the group met at Eye Green Nature Reserve. The weather looked threatening, rain was forecast but we were lucky. The rain held off and the sun came out briefly for us.

Eye Green Reserve is 25 acres behind the houses in Eye and is managed by Peterborough City Council. It's just the right size to walk around in a couple of hours. Originally the site of brickworks, it became a reserve in 1996. It has lots of woodland, reedbeds, a large lake and a number of ponds with resident swans and waterfowl. There are good paths for walking round and much to look out for. Because of its original usage, it



has some bridges and steps up and down slopes to ensure a good safe path.

The main road and local housing estate come close to the Reserve, some overlooking. However, there is much to be seen, with wildfowl, birds singing and bushes and trees in full leaf showing the approaching signs of autumn. It is a lovely and interesting place to visit.

**Report by: Jo Astle**

**Group Leaders: Margaret Beardshaw and Jo Astle**

### **JAZZ SWING AND BIG BANDS**

For our September meeting Geoff Whittle presented a mixed bag programme, postponed from July, of pieces by past jazz luminaries. The meeting took place at Phil Jones' house.

We heard a whole range of pieces stretching from orchestral arrangements from and including Chic Web, Don Redman Will Bradley, Ted Heath among others through to singers Chris Connor, Julie London and Peggy Lee. An intriguing piece by the Dave Brubeck Quartet called *Three to get ready* was in the most unusual time of seven beats to the bar. Also, from the genre of small groups we heard the Benny Goodman Trio and Quartet (*Sweet Georgia Brown*).

Throughout the morning, Geoff provided an informed commentary not only about the individual pieces but also on the performer(s).

Thank you, Geoff and Phil for an entertaining and most informative morning of fondly remembered, and new to some of us, music.

Our next meeting will be at 10am on 23 October at Terry Noble's house.

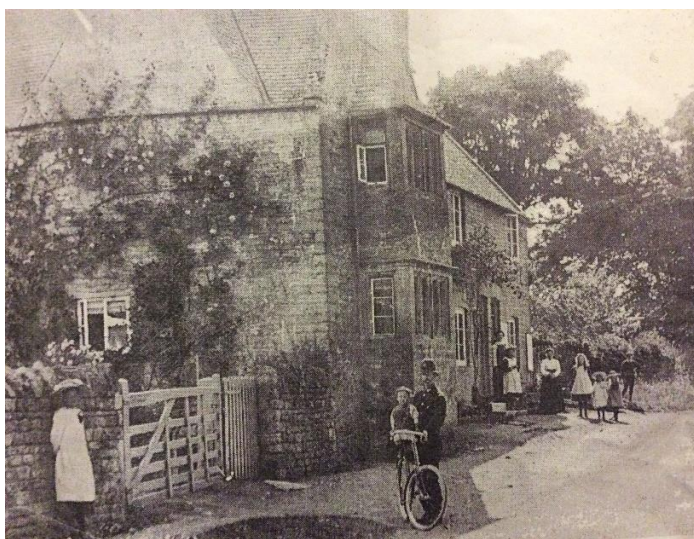
**Report by Terry Noble**

### **STROLLERS GROUP**

It didn't bode well as we pulled back the curtains on the morning of our latest walk but it didn't deter nine Strollers who turned up at Barnwell prepared for everything the elements could throw at us. However, the well-documented recent persistent rain had relented for at least a day or so.

Geoff led the way, starting from the Montagu Arms, which is set against Barnwell Brook in this attractive Northamptonshire village. The brook is crossed by several bridges along the length of the village and historically it separated the two parishes of St Andrew's and All Saints.

Fortunately, Geoff had carried out a 're-recce' to see if his planned route was still passable and we were able to enjoy a rain-free sojourn around this attractive village, be-decked in the limestone, characteristic of this neck of the woods and part of a chain of hills which stretches from the Yorkshire Wolds to the Chilterns.



Our walk passed the house where Geoff's grandfather was policeman circa 1900. The photographs show Geoff and Julie outside last month and the second one taken about 1900.

Although the river was swollen compared to when he initially tested the walk, we were able to stick to the original route.

It goes without saying that we finished the morning with lunch at the Montagu Arms.

This month's walk is a change to the programme, with November's walk being brought forward to this month, which will be a return to Ryhall and Belmesthorpe in Rutland, on Friday 25th. Details to members of the group will follow.

**Report and Group Leader: Bob Deller**

### **POETRY GROUP**

On a rainy dull afternoon our group of poetry lovers enjoyed a lovely session of poetry and laughter with the letter S as our guide.

We began with John Keats and the very seasonal *To Autumn*. Followed by Shakespeare and *A Madrigal*. This is all about age and youth not living together, this caused a lot of laughter. Then, Percy Bysshe Shelley's *To the Moon* and William Edgar Stafford's *YES* made for a great discussion.

We lightened the mood with *The Seed-Shop* by Muriel Stuart. *Summoned by the Bells* by John Betjeman bought back memories of London for some of us. *Acquainted with the Night* by Robert Frost was beautiful. Then the powerful poem by Lord Byron, *The Destruction of Sennacherib*. We finished with Shakespeare taken from *Henry V* 111. Our thanks to Juliet for being a wonderful host. We all agreed, Poetry was our favourite group.

Moon in a wheelbarrow  
Stars in a skip  
Dawn holds the handles  
Sun gets a grip  
By Lemn Sissay

**Report by Susanne Hoadley, group leader**

### **CYCLING GROUP**

On Friday 11th October on a chilly bright blue sky, five of us set off from the Bridge in Market Deeping for our monthly bike ride.

We initially rode along Lincoln Road and turned onto Mill Road to take us across the A15 into Maxey, continuing on Mill Road around the outskirts of Maxey then turning right onto High Street.



The entrance to the Old Rectory, outside Greatford

At the junction with King Street, we turned right and went through West Deeping and across the Stamford Road on King Street. We followed this past the Breedon, Cemex Quarries and the Industrial Estate, finally turning left off King Street onto Baston Road then shortly afterwards took a right turn onto Wilsthorpe Lane.

We cycled through the tranquil village of Wilsthorpe turning onto Main Street to head towards Braceborough. After passing through Braceborough, we took the Carlby Road towards Greatford continuing on to meet up again with King Street. We crossed King Street and carried on to Langtoft via Stowe Road and West End and onto the A15 back towards Market Deeping where we continued along Halfleet, Church Street and the High Street to the Bull for our lunch.

An extremely enjoyable 15-mile ride with great weather and lovely views, so thank you Terry for planning the route.

Next ride will be on Friday 8th November.

**Report and Group Leader: Jim Torrance**

### ART APPRECIATION GROUP

The topic for September was Gainsborough seen through two different presentations. The first was a 10 minute animation of Gainsborough's life aimed at children and the second was a 30 minute lecture about his life, given by an expert from The National Gallery.



The dog on the painting is a Pomeranian. Also known as a Fox Dog. Not many people know that!!!

The first presentation led very well into the second as many of the facts given in the animation were again given in the lecture. In the lecture the expert concentrated on the painting entitled *The Morning Walk*. This was enhanced by the accessibility of other paintings by Gainsborough that were in the room, to illustrate her points.

*The Morning Walk* was about two 'almost' newlyweds. Their names were Mr. and Mrs. William Hallett. They were from wealthy families and looked very much in love. However, Mr. Hallett was a gambler and almost lost their entire fortune to his addiction. Apparently, they had a happy marriage, lasting 48 years. He remarried after his wife died but was buried next to her when his time

finally came.

On 14 October, we have as our speaker John Shearman. The title is 'Mannerism'. We meet at The Deepings Sports and Social Club. 10. for 10.30. New members welcome.

**Report and Group Leader: Sandra Jones**

### WEDNESDAY GARDENING GROUP

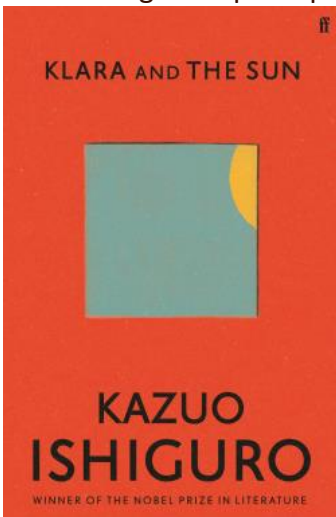
Ten members met at Sue's house in Maxey to hear a talk by David Cowcill of the Langdyke Trust. The Trust manages a number of local reserves of differing sizes - either in its own name or on behalf of businesses such as Tarmac. David talked about the plants and wildlife which have appeared as well as the Jacob and Hebridean sheep and Belted Galloway cattle which are used for grazing. All the work on the reserves is carried out by volunteers (more are also welcome!).

Our next meeting will be at Angie's house at 130 Eastgate on 13 November when we will discuss planning for 2025.

**Report: Jane Cooke  
Group Leaders: Jean Foster/Jane Cooke**

## MONDAY READERS GROUP

Kazuo Ishiguro is perhaps best known for his novel *The Remains of the Day*, which became a wonderful film starring Anthony Hopkins and Emma Thompson, so when one of our members chose *Klara and the Sun* by the same author, we were fairly sure it would be a remarkable choice. As it turned out to be.



Set in a future America (a future that is coming ever nearer) the story is about a solar powered 'Artificial Friend' called Klara, who is bought to be a companion to Josie, a young girl who is isolated from most social contact after being 'uplifted', or genetically modified to be super intelligent.

Which all sounds grim and dystopian but, in fact, provides an involving, thought-provoking and moving read.

Klara, who is the narrator is brilliantly realised as a character in her own right, developing empathy and feelings as she learns what it is to be like a human, and the other characters are rounded and believable.

Written in 2021 as a vision of a future, the book is becoming more relevant year by year, whilst the themes of love, loyalty, and kindness are timeless.

Virtually all of us thought it to be a wonderful book and would thoroughly recommend it, both as a warning and a promise of things to come.

**Report by Liz Waterland  
Group Leader: Liz Waterland**

## THURSDAY WALKING GROUP

### September report

Due to holidays and other commitments it was a small group (only five of us) that undertook the six mile September walk of the group organised by Godfrey Parkes and David Scott.

It had been 18 months since we last did this walk. Leaving the Burghley Golf Club on a fine morning and heading downhill towards Stamford to turn right through the impressive Bottle Lodges gateway. Here we found that with the Burghley Horse Trials only finishing three days earlier, diversions were in place around the southern perimeter of the estate instead of normally following the path straight through the middle.



Following this revised route we were able to pass many of the jumps from the event and saw the numerous workmen dismantling all the shopping area and grandstands which showed the extent of this popular event.

We eventually exited the estate on the Barnack Road and followed the path inside the hedge to and through Pilsgate until we reached Mill Road, turning right and passing a well-maintained windmill on route.

At the end of Mill Road we turned right again, walking diagonally through several fields, past more Horse Trial jumps, before we came across a couple of farmers carrying out checks. These checks that members watching



Countryfile or other farming programmes on TV will probably be familiar with were herding sheep through pens before stamping them with various bright colours depending on what the checks revealed.

Carrying on via the southern side of the estate we had splendid views of the rear of Burghley House, before emerging along the side of the golf course and to the Clubhouse, where we were served as usual, with very good meals in comfortable surroundings. All in all a very good walk with different sightings to what we normally come across on this walk.

## October report

Only nine walkers this month.



We met at the Tulip Queen beside the A1175, just on the edge of Spalding. It was a fine, dry morning with quite a cold nip in the air – soon be time to don gloves and scarves and woolly hats!

Heading north, we walked alongside the river Welland, passing the Welland Yacht Club, on the opposite bank.

The path emerged onto Barrier Bank Road which we then followed, with the river on our left.

The road now became Cowbit Road where the river had a tributary off to the right. This was excavated and opened in 1953, hence the name Coronation Channel. This channel

diverted the excess waters around Spalding and ended the past flooding.

We walked alongside this, with the river on our left, until we came to Clay Lane. Here we turned right and headed south towards the A16. Halfway along Clay Lane, we came upon the entrance to The Gordon Boswell Romany Museum, where we stopped for a photograph.

After crossing the busy A16 we headed down a track-way known as Barrier Bank. Upon reaching a drain channel Barrier Bank now headed North West taking us back up to the A1175.

From here it was just a small distance back to our starting point where we were treated to a very pleasant meal at the Tulip Queen.

Our thanks to Peter Jackson for organising the walk and dining venue. The walk was 6.7 miles in length and thanks to Peter we were treated to several stops where we were given interesting facts about things we walked along and past.

**Report by Richard Coulson  
Group Leader: Richard Coulson**

## CRAFT 2 GROUP



First time back for craft in September and we either did some quilling or some project we brought from home. Quilling is using a series of shapes formed from winding thin strips of coloured paper round a special “pen” to make tight rolls of colour and then inserted in a frame to make a picture.

Those of us trying the quilling again fast came to the conclusion it had not be revisited for a long time because it was so fiddily!!

Well done to those who stuck with it and it was good to see almost all of you back after the break.

October will be planning the activities day display plus some more projects brought from home. See you all on 21 October at 2pm

**Group leader and report Liz Noble**

## THURSDAY GARDENING GROUP



Our October meeting saw eight members gather for coffee and cakes at the Blue Diamond Garden Centre, Peterborough. As the recent temperatures had dropped sharply, we asked if our planned talk could take place instore but as that didn't prove possible and as we are 'tender perennials' rather than 'hardy annuals' we decided to settle for refreshments and a chat instead!

Our next meeting will be at the home of Mike and Sandy Bowers when we will agree our Christmas refreshment plan; reflect on our 2024 activities and look ahead to 2025.

**Photo: Ann Pettitt, Report: Ann Pettitt  
Joint Leaders: Kay Parker and Ann Pettitt**

## ITALIAN GROUP



On Friday 13 September seven of us went to Vesuvio Italian restaurant at Whittlesey for our annual summer lunch (il nostro pranzo estivo annuale). The food there is delicious and to be recommended. We chatted a little in Italian and a good time was had by all.

**Lynne Alcorn (group leader)**

## HISTORY GROUP

### Women in Medicine by Dr. Martyn Thomas



Dr. Martyn Thomas gave a very interesting talk about the inequalities of medicine and the inability of society (run by men) to acknowledge the role of women in medicine until probably the end of the 19<sup>th</sup> Century and the beginning of the 20<sup>th</sup> Century. He took us through the centuries from Medieval times to present day.



One of the names mentioned was Hildegard of Bingen (1098-1179) who wrote a book called Simple Medicine She studied plants and believed in holistic treatment



He talked about the Wise Women who could use plants as cures, some of which are in today's drugs in some form or other. He talked about witches and the picture shows a Witch bottle.

If you wanted to ward off evil spirits or witches you filled a container such as this with the patient's urine, added needles, pins and nail clippings. You secured it with a cork and placed it on the open fire. If it exploded the evil spirits went away. Mind over matter perhaps? Don't try this at home!!

He then took us through the Victorian and Edwardian times; The Crimean War, Florence Nightingale, Mary Seacole., Elizabeth Garratt Anderson, Edith Cavell, Dame Cicily Saunders and various others. The list was very long

He ended with women of the recent times who have contributed to the medical profession now being 50% female.

Margaret Turner Warwick (1924-2017) was made the first female President of the Royal College of Physicians in 1989. This had been founded by Henry V111 in 1518 so it took 471 years to award the presidency to a woman!

Thank you to everyone who helped out on the day.

October's speaker is Philippa Massey and the topic will be Fair Maid Joan Holland A Romantic Medieval Tale.

**Report and Group Leader: Sandra Jones**

## **PACERS GROUP**

Well our good luck with the weather could not last forever and this month it decided to change. It rained most of the morning and of course stopped when we got back to the pub – not cold or windy though. A lot of wet waterproofs and boots loaded into cars before lunch. At least I now know my waterproof jacket is waterproof – it was still drying out the next day.



Geoff and Julie led nine walkers this month as we started at The Fox at North Luffenham – booked lunch and used the facilities. The huge amount of water underfoot, as well as coming down on us, meant the walk had to be shortened and altered somewhat. Geoff had checked a couple of areas before he arrived at the Fox. Just as well! The bridge that would have been at the end of the walk was almost under water and if we had walked the normal direction we might well have found ourselves trapped on the wrong side. After the bridge we walked over some soft fields, along roads which, despite the rain, gave us some lovely views over the area.

We viewed an old abandoned railway, crossed a bridge over the current railway and arrived in South Luffenham and then walked back to the pub.

A nice walk despite the rain. At The Fox we all enjoyed lunch then we drove home with much better weather than in the morning.

New members are always welcome, please contact one of us if you fancy a not too hard walk on the first Wednesday of the month. We usually walk between 4 and 5 miles.

Next walk will be on Wednesday 6 November led by David - details as usual by email.

**Report: Geoff Whittle**

**Group Leaders: Geoff Whittle and Margaret Beardshaw**

## **COMMITTEE MEMBERS 2023/2024**

Chair  
Secretary  
Treasurer  
Membership Secretary  
Group Co-ordinator  
Gift Aid Secretary  
Committee Member(s)

Margaret Beardshaw  
Mary Martin  
Stuart Wilson  
David Perkins  
June Wheatcroft  
Anne Burton  
Phil Jones

**DEADLINE FOR REPORTS: 8 NOVEMBER 2024**  
**SEND TO:**  
**[NEWSEDITOR@DEEPINGSU3A.COM](mailto:NEWSEDITOR@DEEPINGSU3A.COM)**

### **Non-Committee/Supporting roles**

Speaker Arrangers

Gill Godden  
Lynn Ayres  
Sandra Jones  
Ruth Griffiths

Newsletter Editors

David Scott  
Liz Noble

Newsletter Distribution

Newsletter Distribution

Coordinator

Webmaster

David Perkins  
David Scott

Media Equipment Co-

ordinator/Asst. Webmaster

